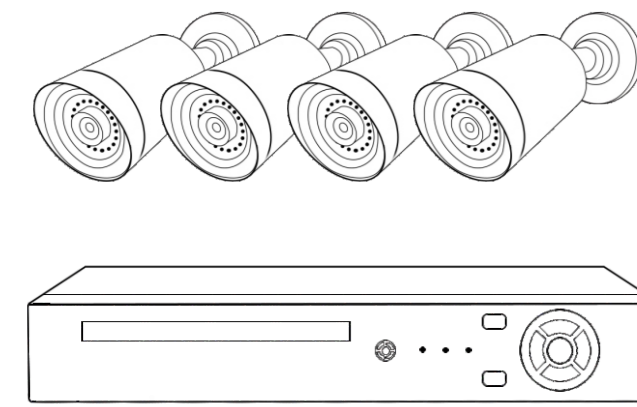


PoE Security Camera System

Quick Guide

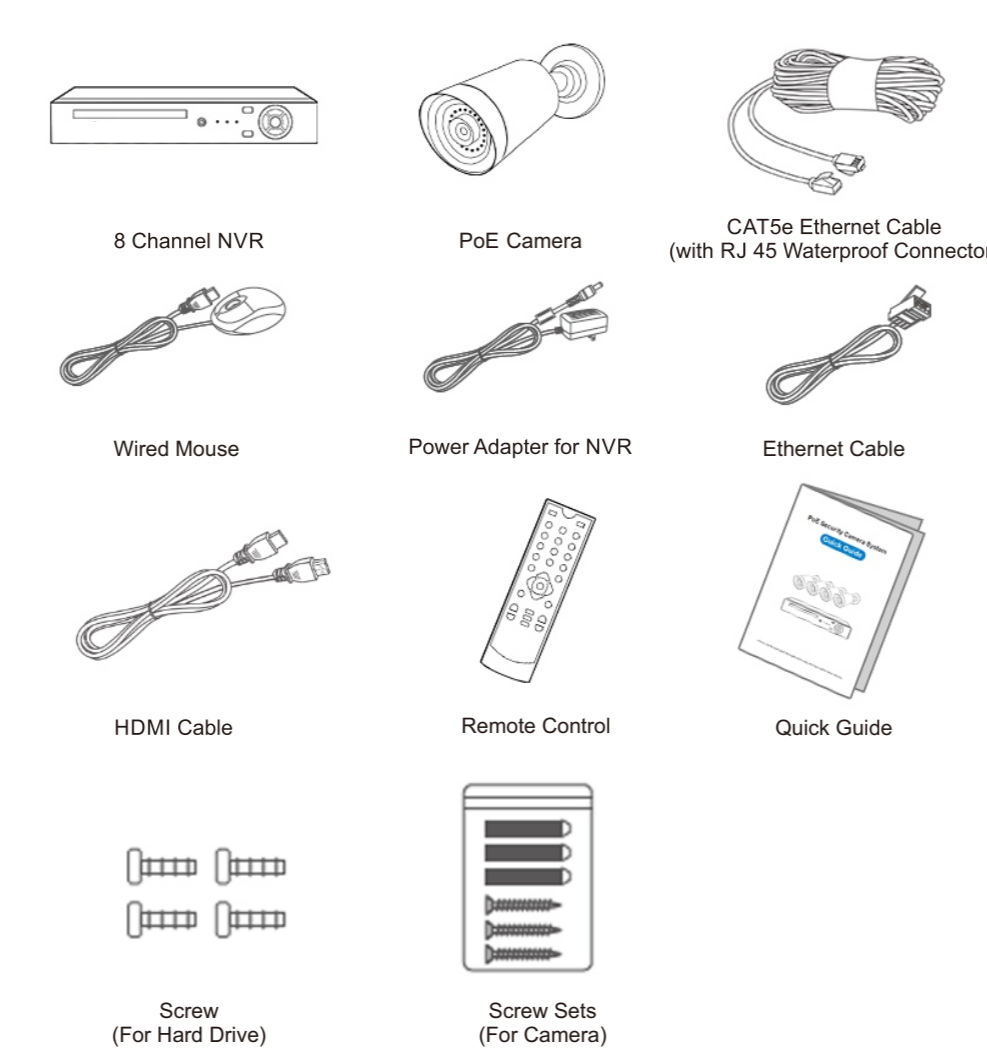


Please read this quick guide thoroughly before using and keep it well for future reference.

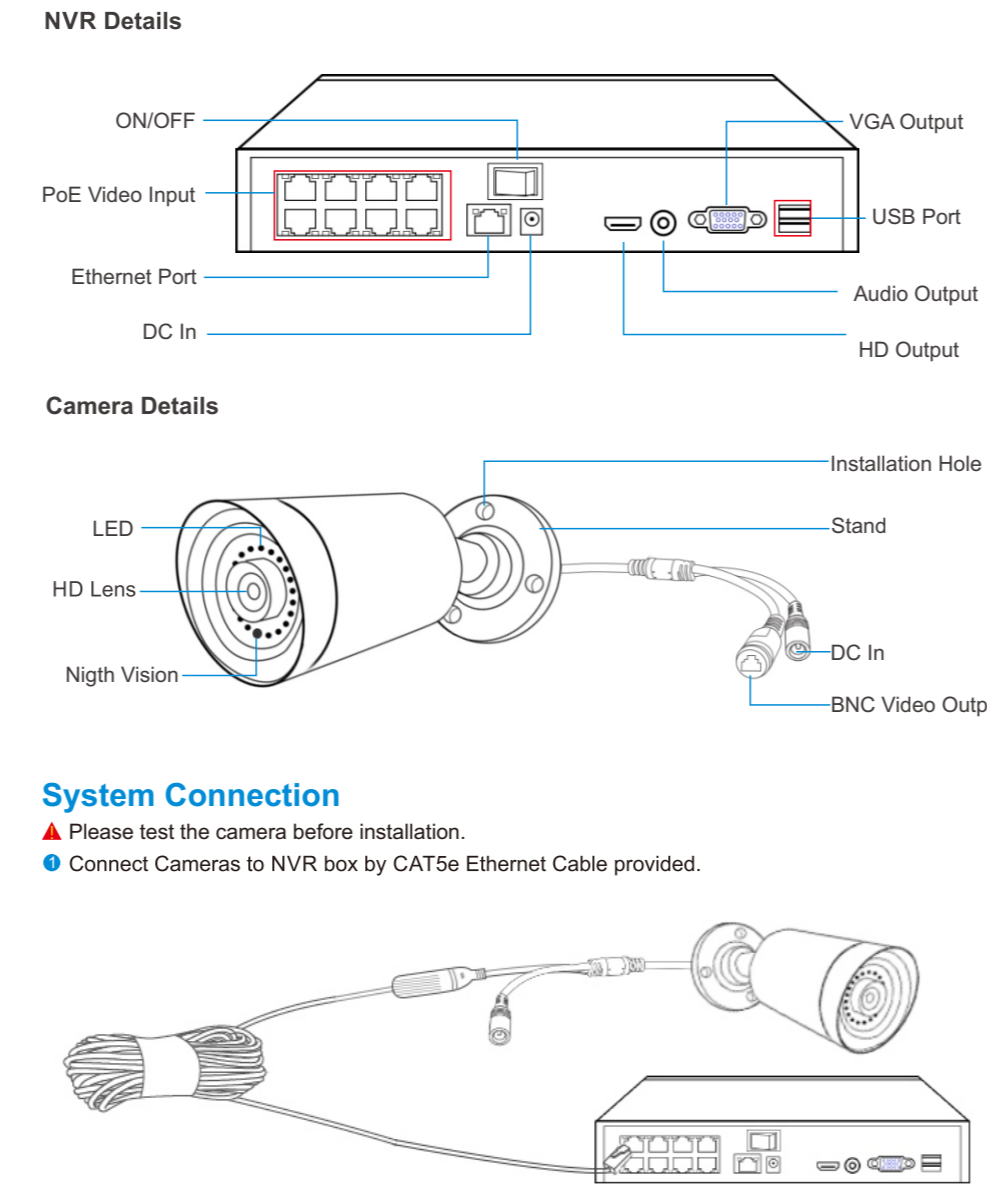
CONTENTS

- PACKAGE CONTENTS.....01
- PRODUCTS REVIEW.....02
- Camera Details.....02
- NVR Details.....02
- System Connection.....02
- System Wizard.....04
- System Login.....04
- Internet Connection.....05
- How To Setup Video Record?.....06
- 24/7 Video Record.....06
- Motion Detect Recording.....07
- HOW TO PLAYBACK VIDEO?.....08
- ADD NEW CAMERA OR REPLACE DEFECTIVE CAMERA.....09
- RESTORE TO FACTORY SETTING.....11
- EXPLANATION OF ICONS.....12
- REMOTE ACCESS ON MOBILE DEVICE.....13
- REMOTE ACCESS ON PC CLIENT.....14
- FAQ?.....17
- 1.What's the warranty?.....17
- 2.How to modify NVR password?.....17
- 3.What should I do if I forgot my password?.....17
- 4.How to find my NVR's serial number?.....17
- 5.How to change my camera's name?.....17
- 6.What if the hard drive is full?.....17
- 7.How to get motion alerts on my phone?.....17
- 8.What should I do if I got too many push notifications from App?.....17

PACKAGE CONTENTS



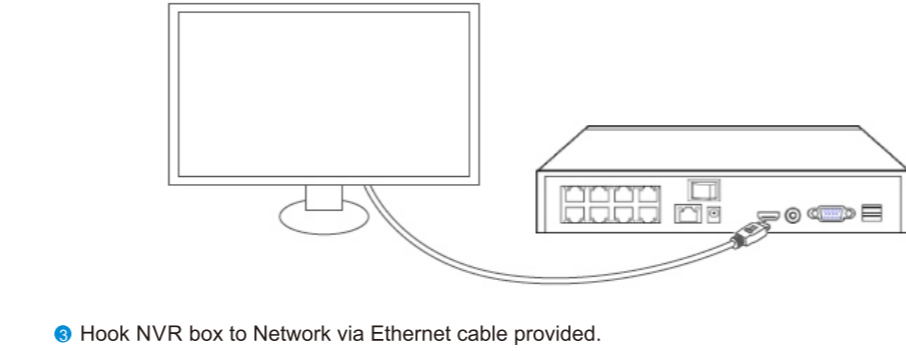
PRODUCTS REVIEW



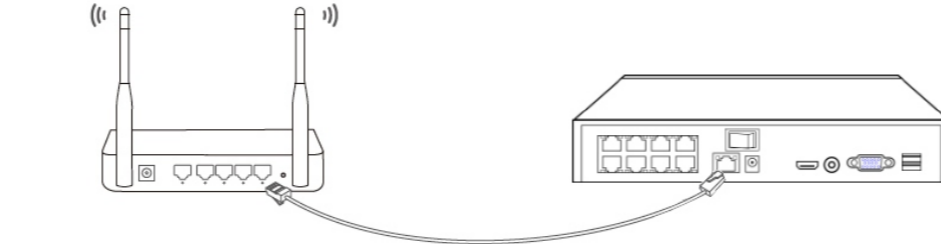
System Connection

- ▲ Please test the camera before installation.
- Connect Cameras to NVR box by CAT5e Ethernet Cable provided.

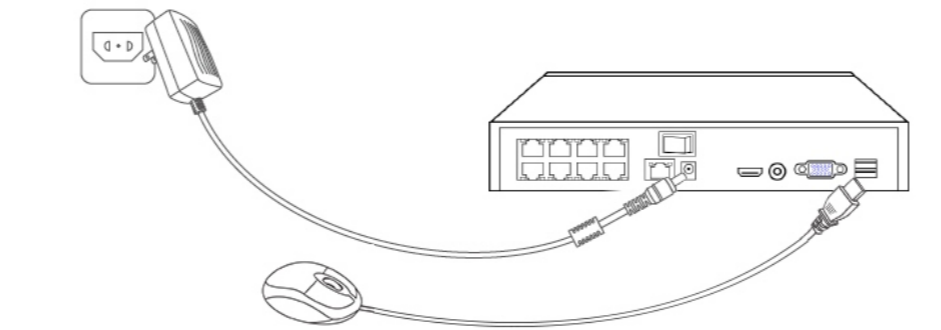
System Wizard



● Hook NVR box to Network via Ethernet cable provided.

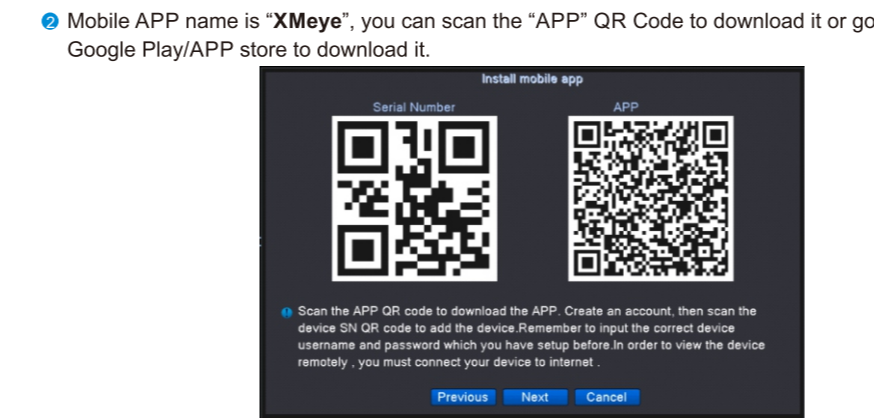
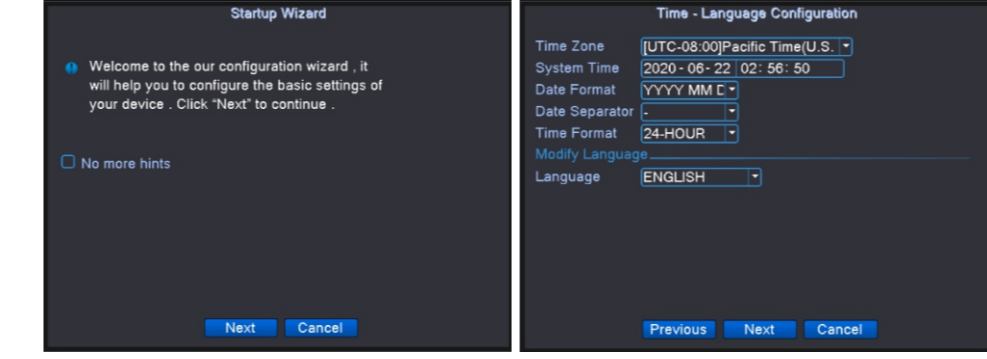


● Connect NVR's mouse and power on the NVR by original power adapter



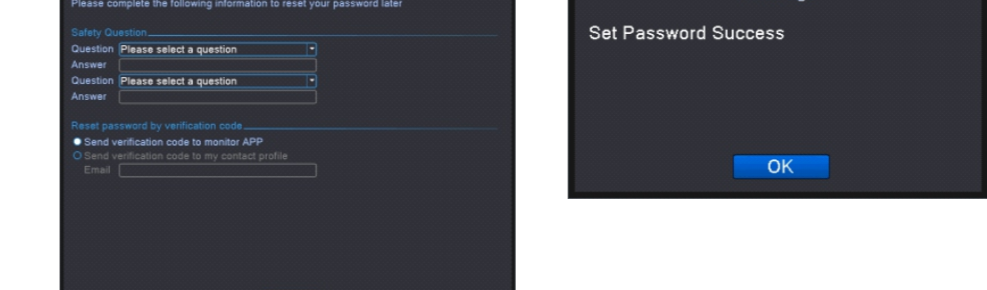
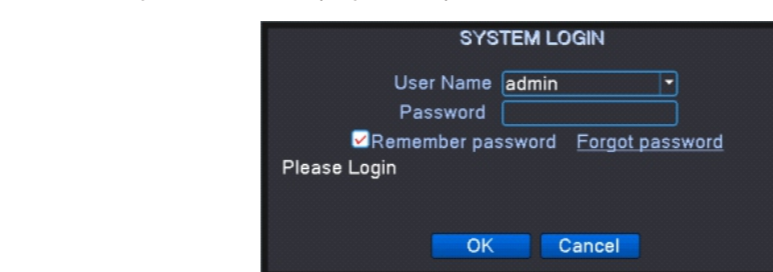
System Wizard

● Hit "No more hints" to exist system wizard.



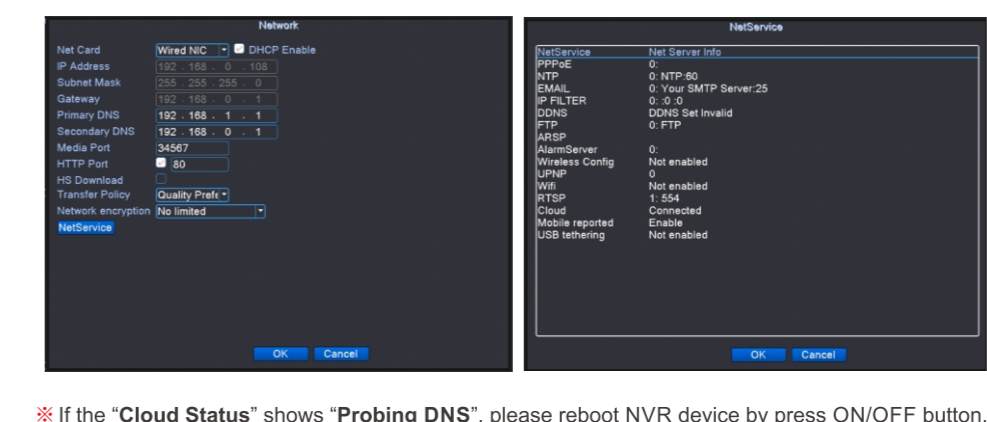
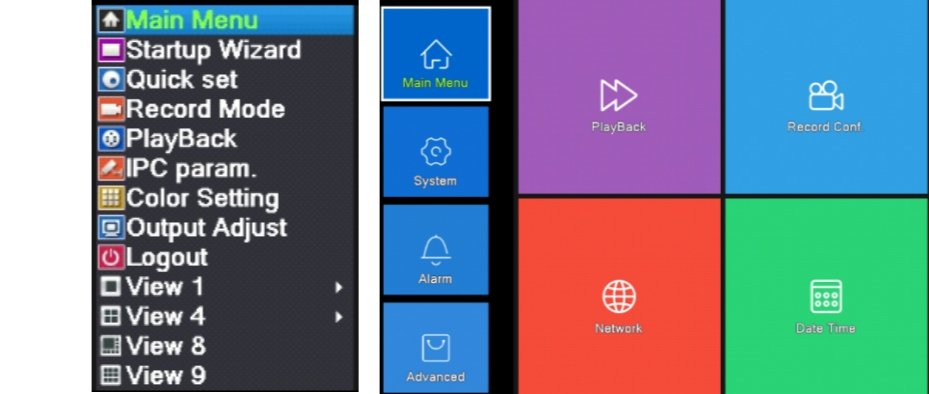
System Login

● Default password is blank (no password)



Internet Connection

- Please connect NVR box to Router via Network Cable.
- Right-Click Mouse Navigates to Main Menu > Network > Enable DHCP.
- After that, please go to "Net Service", if the "Cloud Status" shows online, means NVR is online and ready for remote access.



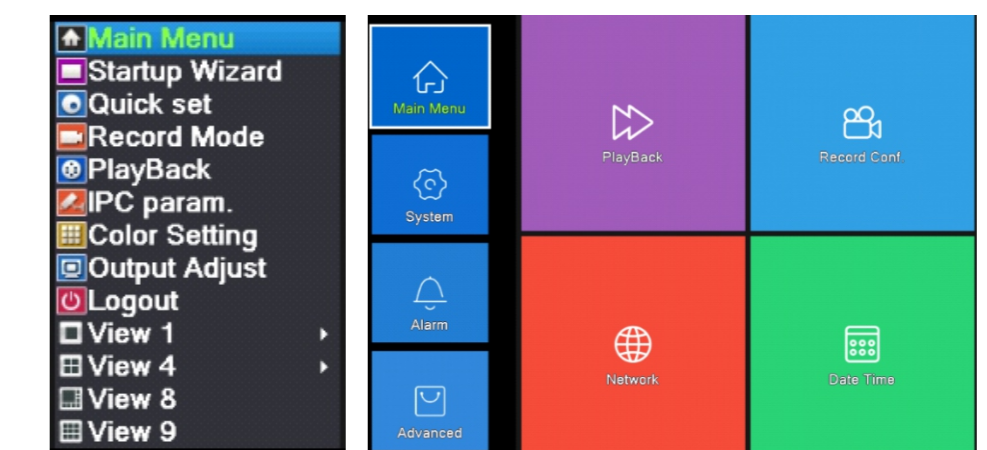
● If the "Cloud Status" shows "Probing DNS", please reboot the NVR by press ON/OFF button. If the problem remains, please contact the vendor.

How to setup video record?

24/7 Video Record

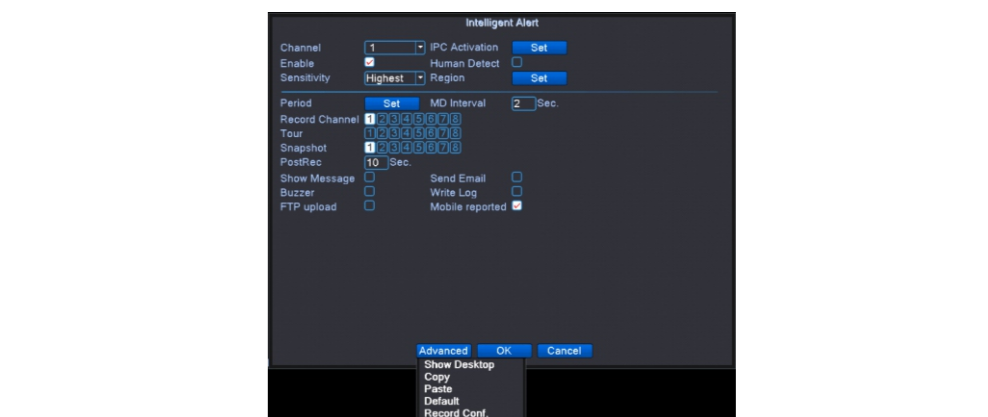
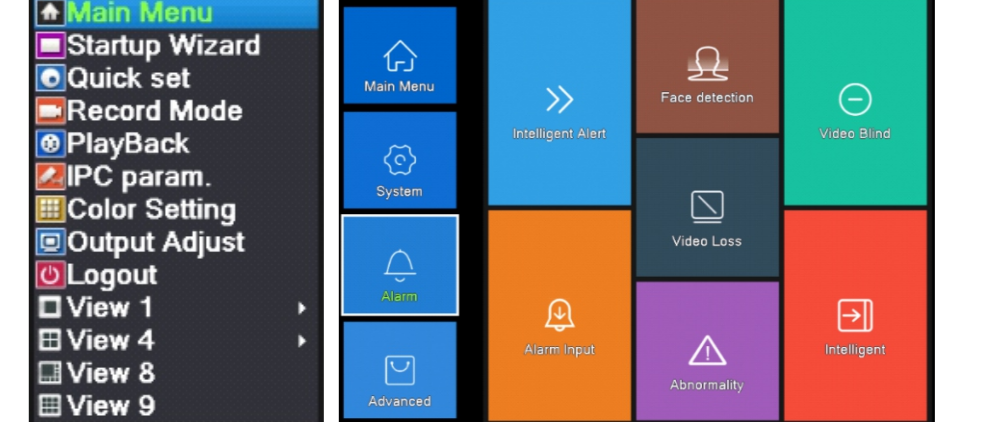
Please right-click mouse navigates to Main Menu > Record Conf.

- You can customize schedule recording based on your needs
- Default Setting is for Channel 1, hit "Advanced" > "Copy", Copy the settings to other channels.



Motion Detect Recording

Please right-click mouse navigates to Main Menu > Alarm > Intelligent Alert > Tick of "Enable".

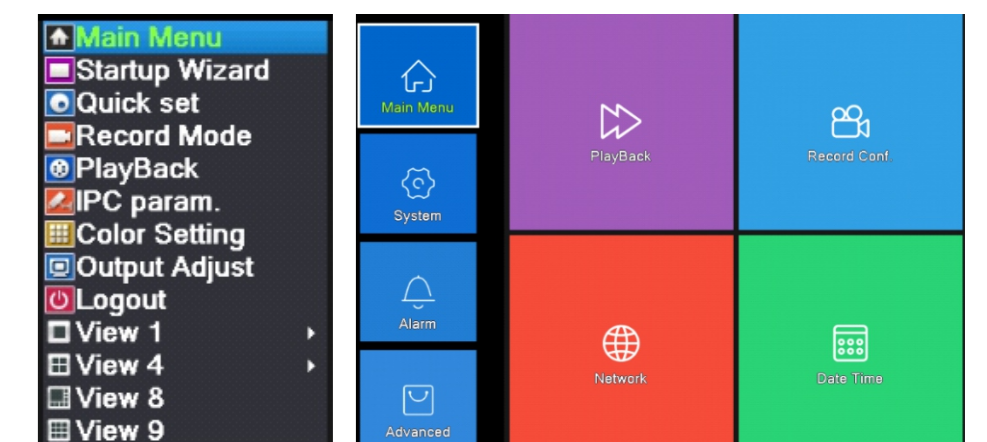


Tips:

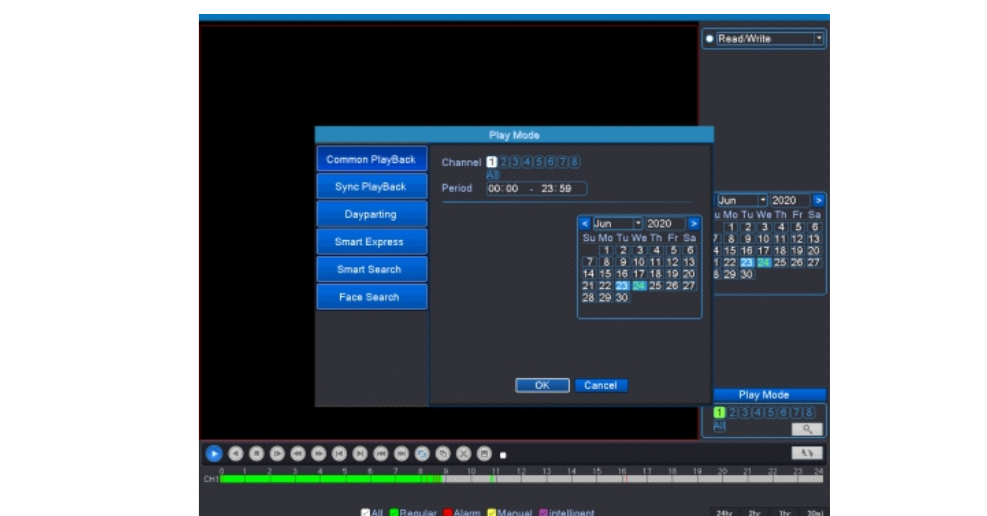
- 1) The device will be only recording when motion detected.
- 2) Please Tick off "Mobile Reported" if you need alert push to Mobile APP.
- 3) Default Setting is for Channel 1, hit "Advanced" > "Copy", Copy the settings to other channels.

How to playback video?

● Right-Click Mouse, hit "Playback", Or go to Main Menu > Playback



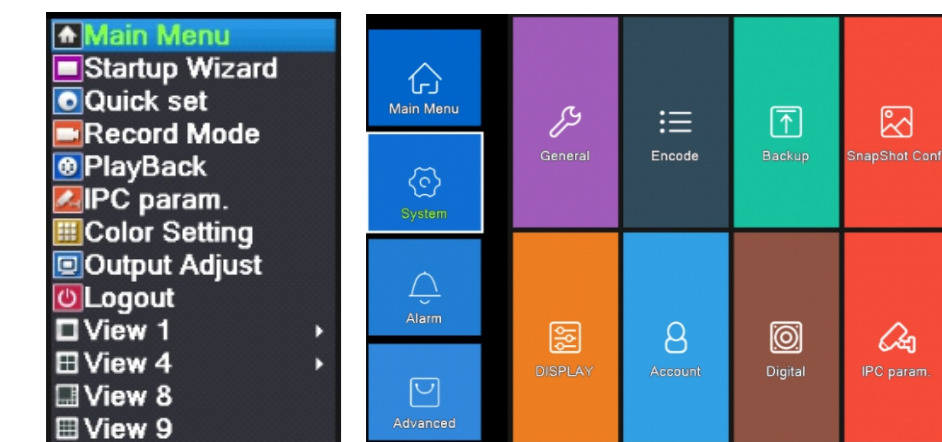
● Select Channel, Period, date, then click "OK"



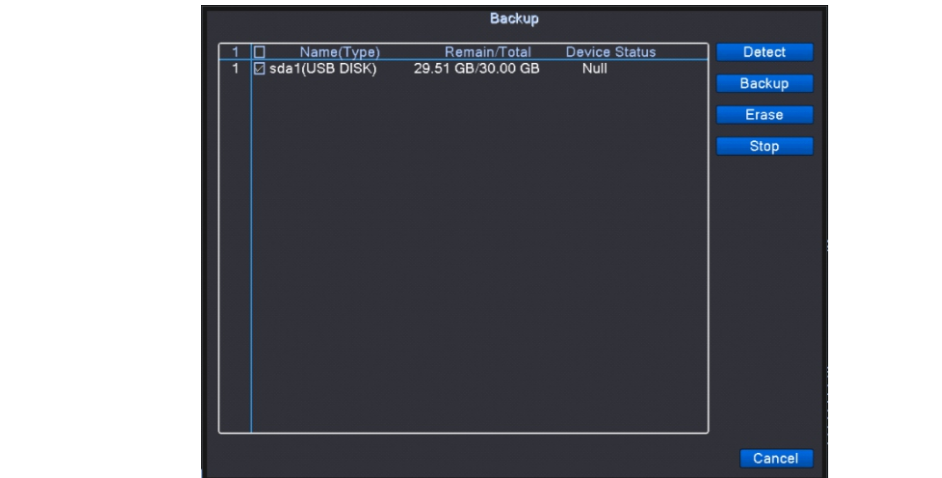
Green: Regular Recording
Red: Alarm Recording

How to backup video?

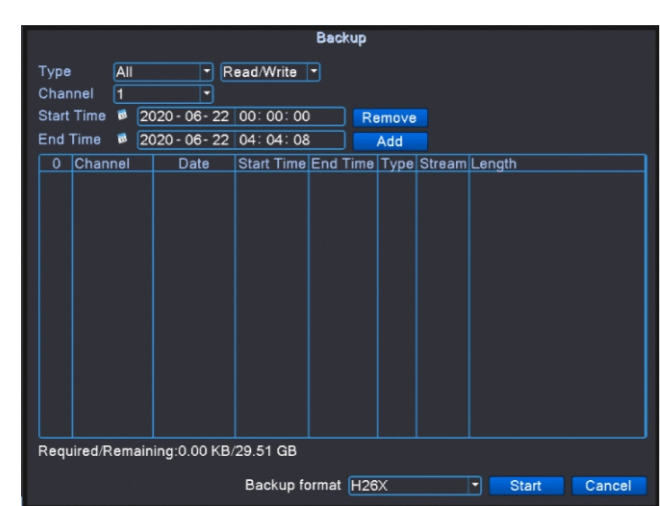
- Insert your USB Device to NVR's USB port.
- Right-Click Mouse, navigates to Main Menu > System > Backup.



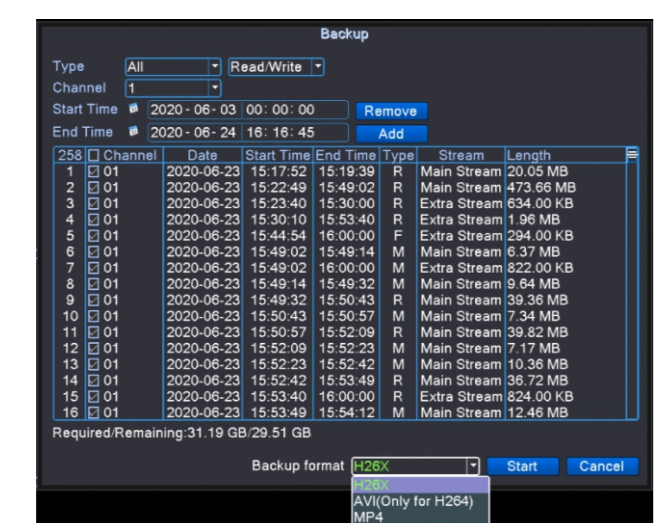
● NVR will detect available USB device. Click "Backup" if your USB Device didn't show up, click "Detect".



● Select Record Type > Select Channel > Set the Time > Click Add

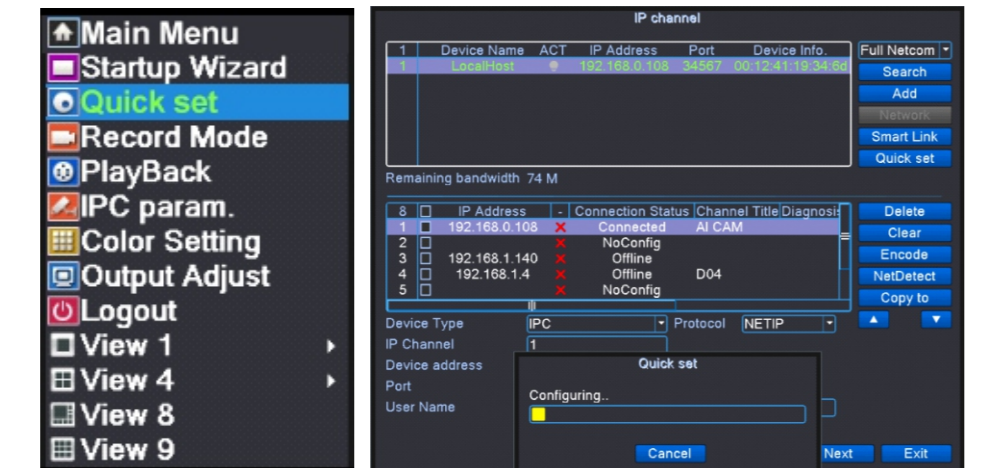


● Select the video Files> Choose Backup format > Start. Please choose "MP4", it's compatible with most of video player.



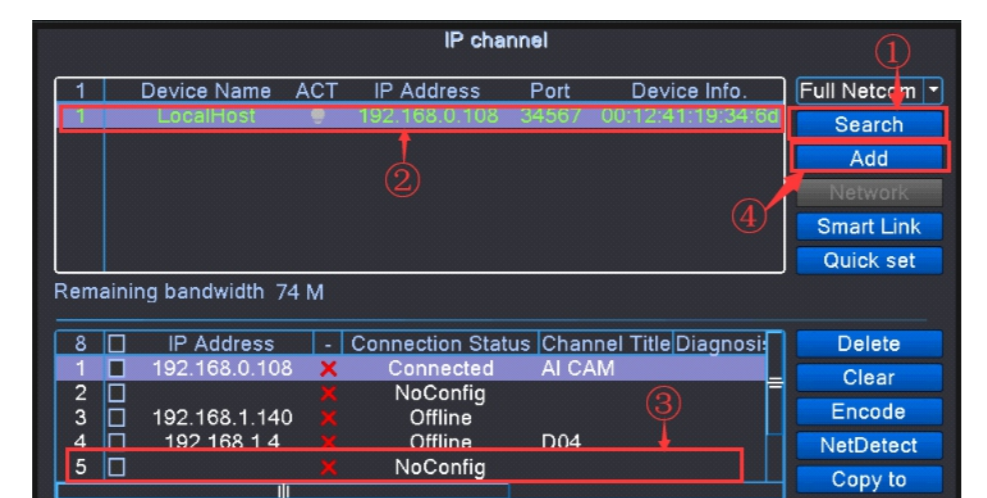
Add new camera or replace defective camera

- Please connect camera to NVR box via Ethernet cable, make sure camera and NVR are powered.
- Right-click mouse > Quick Set (Normally NVR will be configuring automatically)



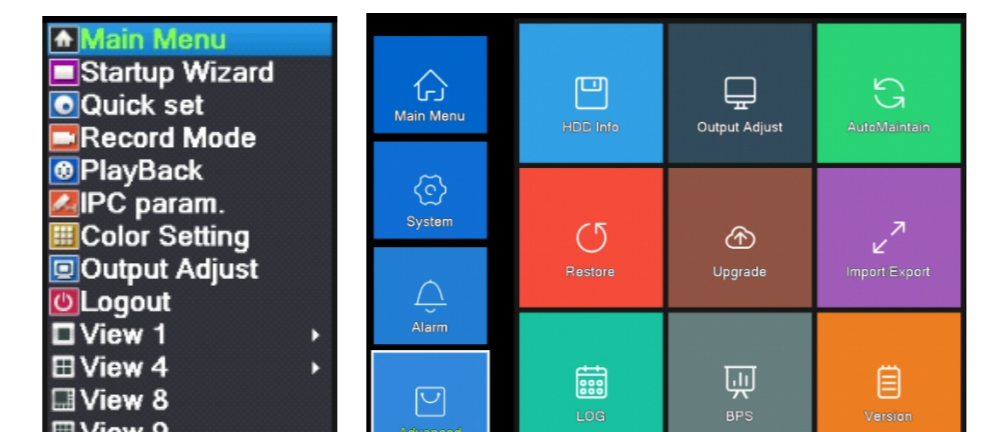
● If your camera still not connected, please manual add as below.

- a) Click "Search", NVR will search camera with same IP segment, then select the new camera's IP address.
- b) Select an empty Channel for the new camera (for example #5), then click "Add"
- c) After configuration successful, click "Apply" to save settings then click "Exit".

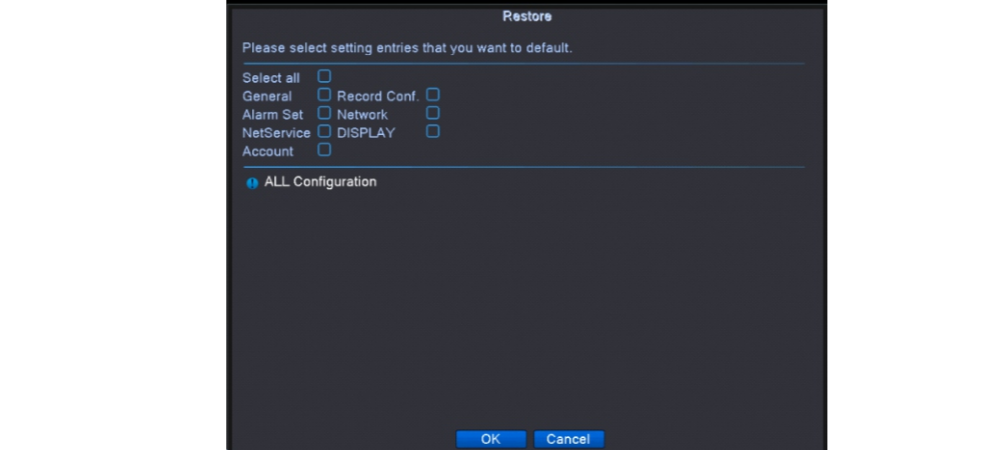


Restore to Factory Setting

Please right-click mouse navigates to Main Menu > Advanced > Restore.

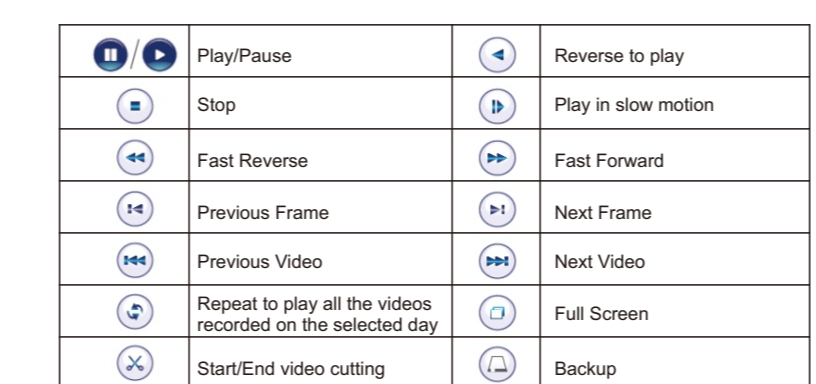


Tick of "Select all" > Click "OK"



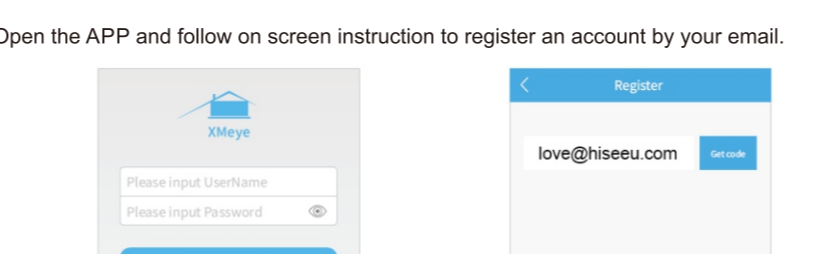
Explanation of Icons

Channel's Name	Icon	Description
Recording	[Icon]	Motion Detected(Default)
Mute/Unmute	[Icon]	Play the video recorded for latest 5 minutes
Human Shape Detected(Default)	[Icon]	Face Detected(Display only after enabling)
	[Icon]	Video Feed Loss Detected(Display only after enabling)
	[Icon]	Camera Blocked Detected(Display only after enabling)



Remote Access on Mobile Device

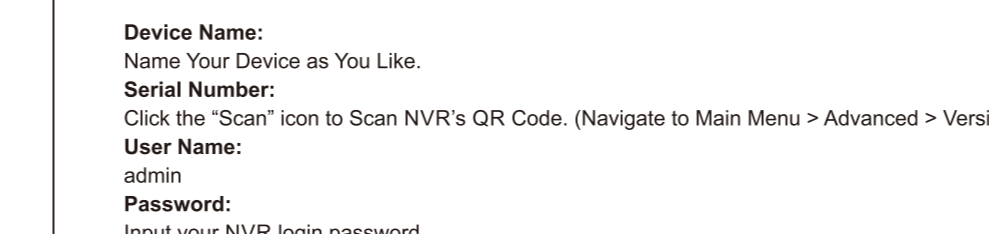
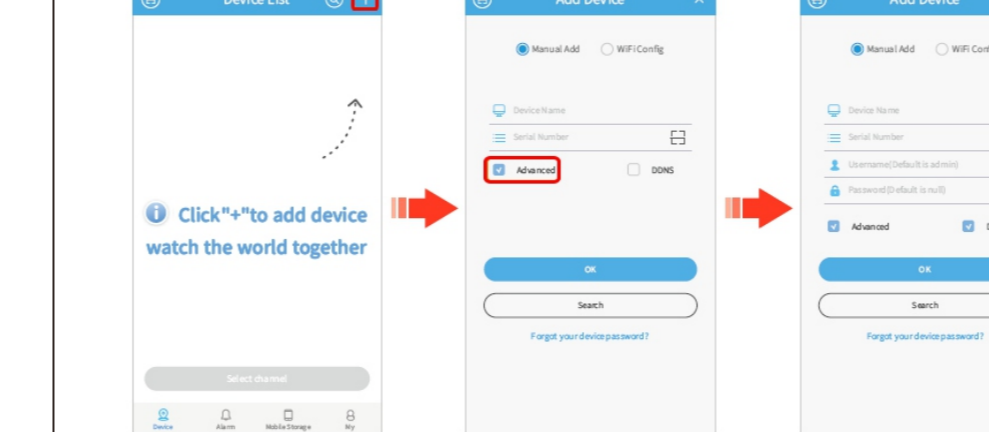
Download Mobile APP "XMyeye" from "Google Play" or "APP Store".



● Open the APP and follow on screen instruction to register an account by your email.

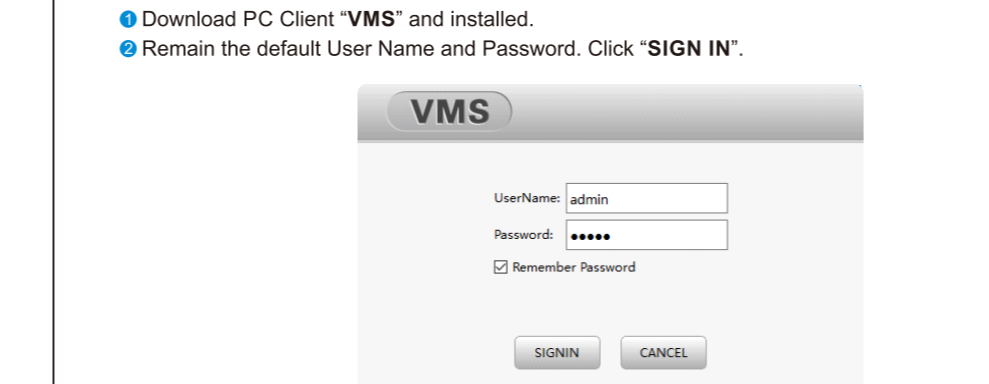
Remote Access on PC Client

Please contact vendor for PC Client download Link and video instruction.

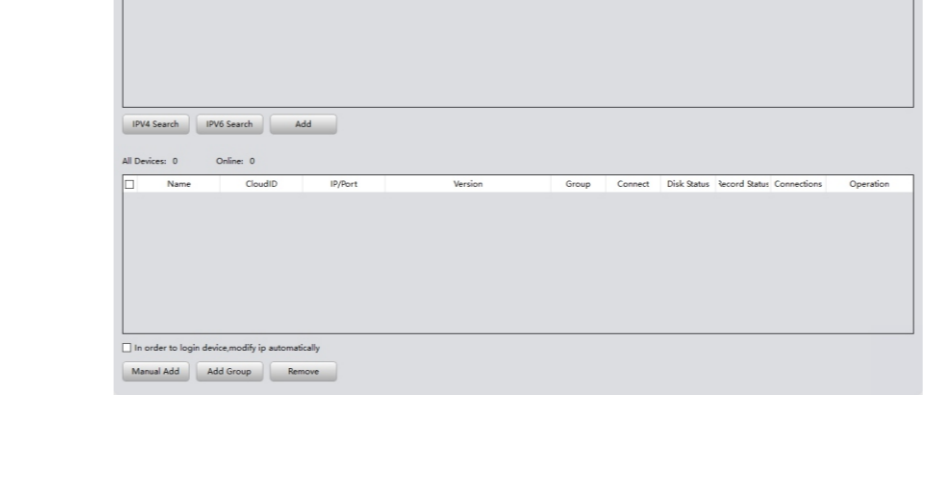
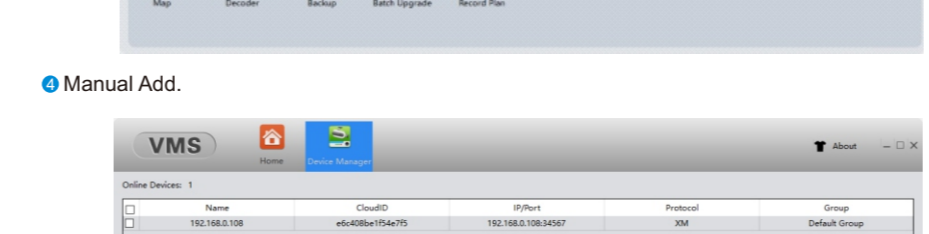
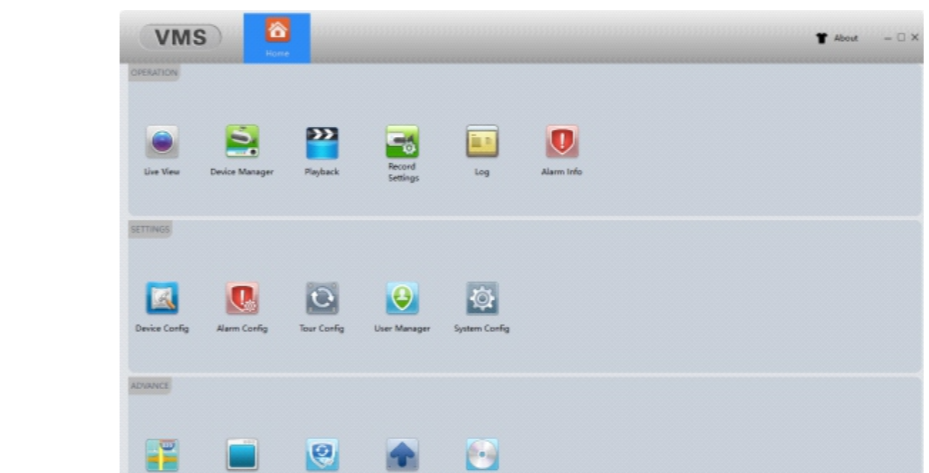


● Download PC Client "VMS" and installed.

● Remain the default User Name and Password. Click "SIGN IN".



Manual Add.



FAQ

- Q1. What's the warranty?
All of our products with 2-year warranty, any difficulties please contact the vendor.
- Q2. How to modify NVR password?
Please Right-Click Mouse Navigates to Main Menu > System > Account > Modify Password.
- Q3. What should I do if I forgot my password?
Please Click Forget Password > Forget Answer, you will get the "CAPTCHA" QR code.
● Open the APP "XMyeye", click "+" icon > Forget Your Device Password (FIND PWD).
● Scan the "CAPTCHA" QR code, you will get a super password.
● Use the super password to login your device and modify password. (If device ask for old password, let it blank)
- Q4. How to find my NVR's serial number?
Please right-click mouse navigates to Main Menu > Advanced > Version.
- Q5. How to change my camera's name?
Please Right-Click mouse navigates to Main Menu > System > Display > Channel Title "Set".
- Q6. What if the hard drive is full?
Hard drive will overwrite itself when it's full. You also can format hard drive by navigate to Main Menu > Advanced > HDD info > Format.
- Q7. How to get motion alerts on my phone?
Please make sure "Motion Detect" was setup properly and enabled "Mobile Report" (Refer to Motion Detect Recording in Page 07).
● Open "XMyeye" mobile App, navigate to Alarm > Alarm Push > Enable "Allow Notifications".
- Q8. What should I do if I got too many push notifications from App?
Please right-click mouse navigates to Main Menu > Alarm > Intelligent Alert.
● Customize "Sensitivity", "Region" and "Period" settings, set alerts for certain areas and period to reduce unnecessary alerts.